

PAINTING CODE - 049
SAMPLE QUESTION PAPER*
CLASS: XII (2025- 26)

Time – 2 hours

Max Marks – 30

General Instructions

Read the following instructions carefully.

- There are 16 questions in this question paper with internal choice.
- SECTION A consists of 8 multiple-choice questions carrying 1 mark each.
- SECTION B consists of 5 short answer questions carrying 2 marks each (Answer in about 100 words).
- SECTION C consists of 3 long answer questions carrying 6 marks each (Answer in about 200 words).

S.No.	SECTION-A	Marks
	Select the right answer from the given options:	
1.	In the painting Chand Bibi Playing Polo, what is the colour of the horse she is striding? (i) Red (ii) Yellow (iii) Blue (iv) white	1
2.	How are the faces depicted in the painting “Krishna with Gopies”? (i) Side Profile Faces (ek chashm) (ii) 1.25 Profile Faces (sava chashm) (iii) 1.5 Profile Faces (derh chashm) (iv) Front faces. (do chashm)	1
3.	Assertion (A): The artistically sculpted image of Ganesha was created by Sculptor P. V. Janakiram. Reason (R): The artist used wood for making this sculpture. (i) Both A and R are true, and R is the correct explanation of A (ii) Both A and R are true, but R is not the correct explanation of A (iii) A is true but R is false (iv) A is false and R is True	1
4.	Devanagari script has been used by the artist in which of the following paintings? (i) Shiva and Sati (ii) Falcon on Bird Rest (iii) Children (iv) Kabir and Raidas.	1

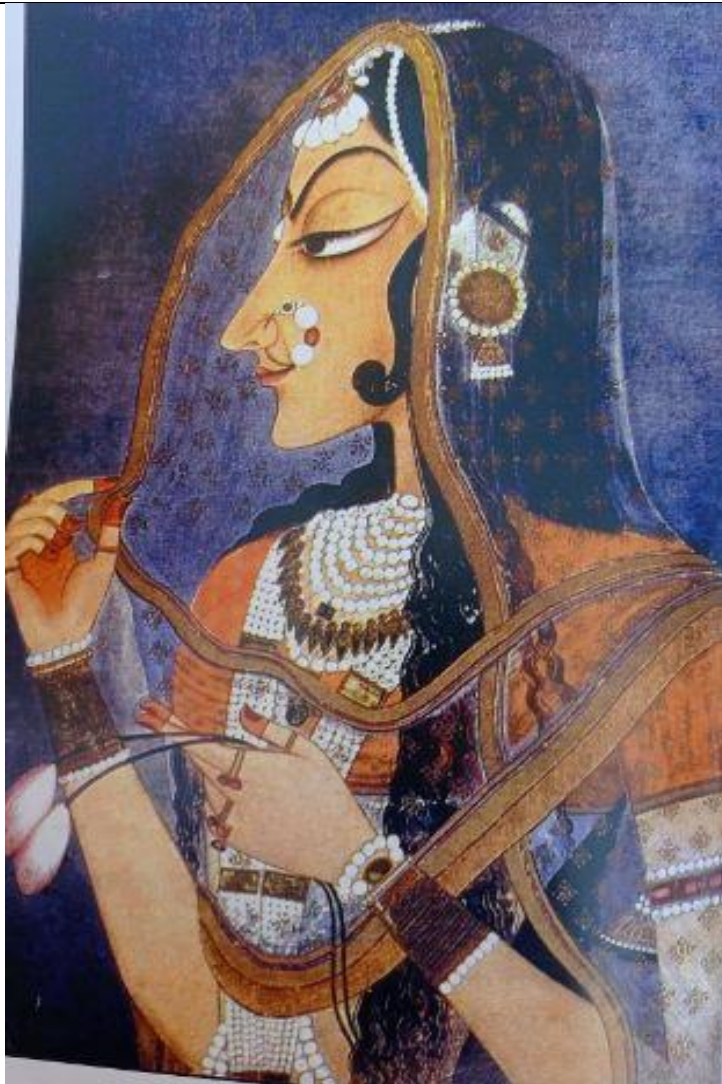
*Please note that the assessment scheme of the Academic Session 2024-25 will continue in the current session i.e. 2025-26.

5.	<p>Assertion (A): Artist Nuruddin of Bikaner school created the painting Krishna on swing, which is divided in two parts.</p> <p>Reason (R) Here the architectural interior of the palace and garden scene are depicted in two parts.</p> <p>(i) Both A and R are true, and R is the correct explanation of A (ii) Both A and R are true, but R is not the correct explanation of A (iii) A is true but R is false (iv) A is false and R is True</p>	1
6.	<p>Who among the following artists painted 'Radhika'?</p> <p>(i) Nandlal Bose (ii) Abanindranath Tagore (iii) Ram Gopal Vijayvargiya (iv) Mohammad Abdur Rehman Chughtai</p>	1
7.	<p>Around whose head has the artist painted a halo?</p> <p>(i) Chand Bibi (ii) Saint Kabir (iii) Hazrat Nizamuddin Auliya (iv) Amir Khusro</p>	1
8.	<p>In the painting 'Maru Ragini' which animal is depicted in the foreground.</p> <p>(i) Horses (ii) An Elephant (iii) A Lion (iv) Dog</p>	1
SECTION-B		
9.	<p>(A) i. Which colours in the Indian National Flag represent courage and sacrifice, peace and faith, chivalry and prosperity? Which symbol inspires us to continuously work toward progress?</p> <p>ii. In your own words, explain how the national flag inspires you to become a good and committed citizen.</p> <p style="text-align: center;">OR</p> <p>(B) In her graphic print, Anupam Sud reflects the dark side of society, portraying the difficult life of a widow.</p> <p>i. Write the name of this print and its medium. ii. Suggest ways to eliminate such social evils from society.</p>	2
10.	<p>(A) This renowned Rajasthani miniature painting teaches the moral values of <i>Raghukul</i>. The dominance of white, blue, and green, along with repeated human figures, conveys the narrative effectively.</p> <p>i. Identify the painting, the artist, sub school and medium of the artwork. ii. What human values do you learn from this painting?</p> <p style="text-align: center;">OR</p>	2

*Please note that the assessment scheme of the Academic Session 2024-25 will continue in the current session i.e. 2025-26.

	<p>(B) The Mughal miniature art style is famous for its grandeur. However, the depiction of female figures is limited.</p> <ol style="list-style-type: none"> Identify the artist and the painting from your course that includes both female figures and Mughal grandeur. Explain the artwork briefly using aesthetic parameters. 	
11.	<p>Both the paintings mentioned below depict women empowerment from different perspectives—through compassion and faith or courage and bravery.</p> <p style="text-align: center;">‘Chaugan Players’ OR ‘Mother Teresa’</p> <ol style="list-style-type: none"> Identify the artist of any one of the paintings and its medium. Describe in brief how the above-mentioned characteristics are displayed in the painting. 	2
12.	<p>In the center of a Mughal school of miniature painting, the divine image of God is depicted in larger-than-life size.</p> <ol style="list-style-type: none"> Write the name of the painting and its artist. Describe the compositional arrangement of the painting. <p style="text-align: center;">OR</p> <ol style="list-style-type: none"> Describe any two main features of Pahari miniature school Name any one artist and the sub-school to which he belonged. 	2
13.	<p>(A) This soul-stirring Bengal School painting places divine figures at the centre. Here Shiva is shown as the first lover and the artist has projected his pain and helplessness by creating an extremely sad and gloomy atmosphere.</p> <ol style="list-style-type: none"> Identify the painting and its artist.? Describe the painting based on its compositional arrangement <p style="text-align: center;">OR</p> <p>(B) Identify the symbolic painting made by artist Abanindaranath Tagore which is included in your course of study,</p> <ol style="list-style-type: none"> Identify the title and medium of the artwork. 	2

	<p>ii. Describe the painting and how does the monochromatic color scheme used in the background compliment the mood and atmosphere.</p>	
	<p>SECTION-C Attempt <u>any two</u> questions from the given options</p>	
14.	<p>From your syllabus, identify the artwork by Amrita Shergill made before independence, where instead of women's faces, she has painted dark areas.</p> <p>i. Write the name and medium of the painting. Describe which major Indian issue is depicted in the artwork and what task are the figures shown doing?</p> <p>ii. Explain the picture in detail in your own words and tell which condition of Indian women is the artist trying to depict?</p> <p>iii. Why are the faces shown in dark? What does the use of colour signify?</p>	6
15.	<p>According to your syllabus, identify the artwork painted by an Indian modern artist in which Lord Rama has been depicted in a mood that contrasts his usually calm nature.</p> <p>i. Identify the Painting, artist, medium and which emotion of Lord Ram has been depicted in this artwork?</p> <p>ii. While describing the painting in detail, explain how far has the Artist been successful in depicting the subject matter?</p> <p>iii. Who is the main figure shown in the picture and which qualities of his character would you like to adopt?</p>	6
16.	<p>Carefully observe and identify the given Rajasthani miniature painting</p> <p>i. Write the name of the painting, its artist and two main features of the respective style seen here?</p> <p>ii. Describe the picture on the basis of aesthetic parameters and justify how the artist has fused feminine softness with empowerment.</p> <p>iii. Explain, how the Government of India has given this painting its due recognition and made this artwork important.</p>	6



*Please note that the assessment scheme of the Academic Session 2024-25 will continue in the current session i.e. 2025-26.