

Applied Art - Commercial Art CODE - 052
SAMPLE QUESTION PAPER*
CLASS: XII (2025- 26)

Time – 2 hours

Max Marks – 30

General Instructions

Read the following instructions carefully.

1. There are 16 questions in this question paper with internal choice.
2. SECTION A consists of 8 multiple-choice questions carrying 1 mark each.
3. SECTION B consists of 5 short answer questions carrying 2 marks each (Answer in about 100 words).
4. SECTION C consists of 3 long answer questions carrying 6 marks each (Answer in about 200 words).

S.No.	SECTION-A	Marks
	Select the right answer from the given options:	
1.	Identify the graphic print that depicts the power of female as creator and references <i>Kundalini Yoga</i> . i. Man, women and tree ii. Devi iii. Of Walls iv. Whirlpool	1
2.	Mention the modern trend painting created by Amrita Sher-Gil, which highlights the limited opportunities for women in society, who had to work hard daily to fulfill their responsibilities. i. Maru Ragini ii. Chand Bibi playing polo iii. Mother and child iv. Haldi Grinders	1
3.	Assertion (A): The expression of sharpness in the eyes of the bird, is skillfully captured in the painting 'Falcon on the Bird Rest' compiled in the series of Jahangir Nama. Reason (R): A black border surrounds the painting on all four sides, featuring intricate golden motifs. i. Both A and R are true and R is the correct explanation of A ii. Both A and R are true but R is not the correct explanation of A	1

*Please note that the assessment scheme of the Academic Session 2024-25 will continue in the current session i.e. 2025-26.

	iii. A is true but R is false iv. A is false and R is True	
4.	This prototype sculpture, set up near the main gate of National Gallery of Modern Art, shows a group of human figures with excellently carved anatomy, engaged in a strenuous activity. i. Santhal family ii. Triumph of labour iii. Cries unheard iv. Of Walls	1
5.	The Painting 'Meghdoot' depict a male and a female sitting between flowing clouds, flying birds and a mystical environment, with clouds represented as messengers. Which school of painting does this belong to? i. Pahari school of painting ii. Bengal school of painting iii. Mughal school of painting iv. Deccan school of painting	1
6.	The Sculpture 'Cries Unheard' was created by the Sculptor named- i. Biren De ii. A. G. Rao iii. Amarnath Sehgal iv. Jyoti Bhatt	1
7.	ASSERTION (A): The paintings made by Jamini Roy reflected his love for simple figures and folk style. REASON (R): His painting Mother and Child from your course is made with oil on canvas to achieve this style. i. Both A and R are true and R is the correct explanation of A ii. Both A and R are true but R is not the correct explanation of A iii. A is true but R is false iv. A is false and R is True	1
8.	Identify the option that does not belong to the Pahari sub-school of miniature painting. i. Kangra Sub-school of miniature painting ii. Chamba Sub-school of miniature painting iii. Kishangarh Sub-school of miniature painting iv. Guler Sub-school of miniature painting	1

*Please note that the assessment scheme of the Academic Session 2024-25 will continue in the current session i.e. 2025-26.

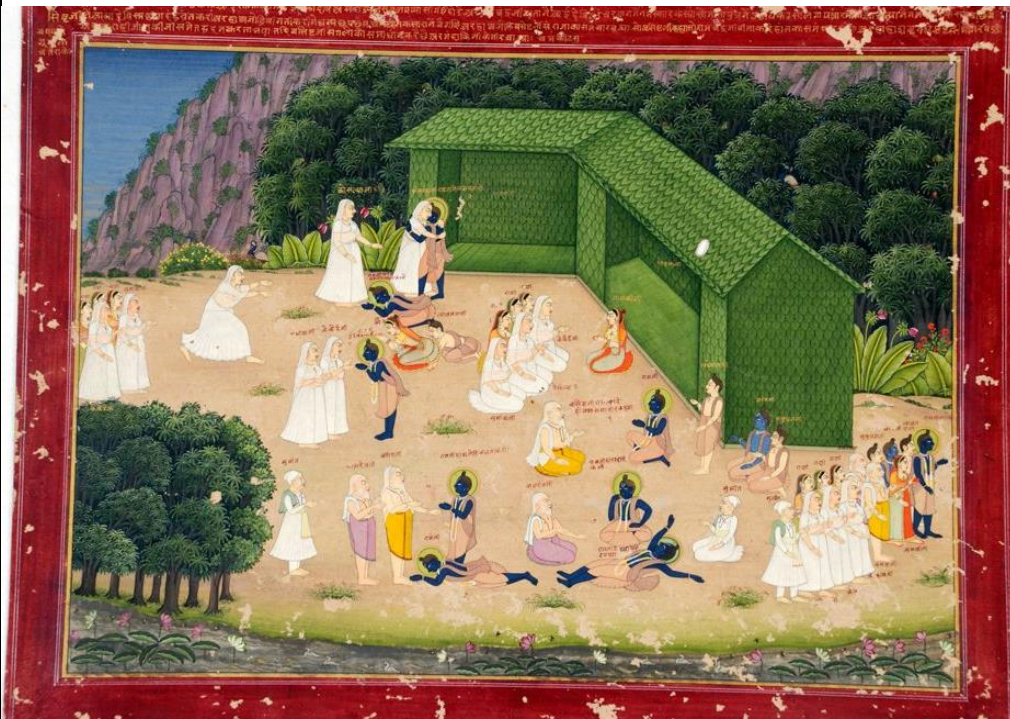
	SECTION-B	
9.	<p>(A) A sculptor used oxidized copper, tin, and wire innovatively to create a statue of a deity worshipped as Vighneshwar/Ganpati.</p> <p>i. Mention the title and the name of the artist.</p> <p>ii. Describe the compositional display of the sculpture's pose and gestures.</p> <p style="text-align: center;">OR</p> <p>(B) Raja Ravi Varma's technique made art accessible and admired by the masses. His realism brought a new dimension to mythological depictions.</p> <p>i. Identify the painting, and the name of its medium & technique.</p> <p>ii. Describe the compositional arrangement of the artwork, mentioning its theme.</p>	2
10.	<p>(A) This contemporary painting depicts a universal maternal figure and social reformer compassionately tending to the needs of the homeless and distressed, portraying the essence of motherly unconditional love, care, warmth, and a healing touch.</p> <p>i. Identify the title of the painting and the name of the artist.</p> <p>ii. Explain, how does this painting exemplify the greatness of a mother's tender care, love and concern.</p> <p style="text-align: center;">OR</p> <p>(B) 'The graphic print highlights the atrocities committed against women as a result of unequal rights and the biases of a male-dominated society. It portrays the helplessness and vulnerability of a woman left alone to suffer.'</p> <p>i. Identify the Graphic Print and the name of its Printmaker</p> <p>ii. Describe the compositional arrangement of the artwork mentioning its medium and technique.</p>	2
11.	<p>(A) A family, regardless of social status or geography, holds great importance. Using easily available materials, a modern sculpture portrays a tribal family migrating in search of a better life</p> <p>i. Mention the name of the Sculpture and the medium used.</p> <p>ii. Describe the Sculpture, explaining the emotions depicted and action engaged while they walk together with their dependent family in their life journey.</p> <p style="text-align: center;">OR</p> <p>(B) The 'Indian National Flag is pride and identity of every Indian. It unites</p>	2

*Please note that the assessment scheme of the Academic Session 2024-25 will continue in the current session i.e. 2025-26.

	<p>and connect us towards becoming a better citizen who are committed towards the duty to serve the Nation.'</p> <ol style="list-style-type: none"> Describe our Indian National Flag and importance of its colours. Mention two occasions when it is officially hoisted in Delhi by the President and the Prime Minister of India at historic sites. According to your opinion, what is the correlation between the National Flag and the National Anthem? 	
12..	<p>(A) During Shah Jahan's reign, an artist painted this miniature that shows respect for the learned who inspired people through simple living and dignity of labor.</p> <ol style="list-style-type: none"> Mention the name of the painting and the artist How is the subject matter of this painting, different from the other paintings made during the Mughal School of miniature painting? <p style="text-align: center;">OR</p> <p>(B) This Mughal school painting portrays God's power during storms, highlighting human gratitude for divine protection.</p> <ol style="list-style-type: none"> Identify the name of the painting, its artist and medium and the Ruler under whose influence it was made. Explain how are the common people showing their gratitude towards the supreme power. 	2
13.	<p>(A) 'A Rajasthani school painting shows the deep love between a king and queen, depicted as Nayak and Nayika traveling with loyal attendants in an outdoor set up</p> <p>(i) Identify the title of the painting and the dominant emotions. (ii) Briefly describe the subject matter of this painting.</p> <p style="text-align: center;">OR</p> <p>(B) 'In this artwork, the artist depicts a scene where a disciple is sitting in front of his guru in search of knowledge and wisdom. They are sitting together in a calm and serene environment.'</p> <p>(i) Identify the name of the painting and its Sub School. (ii) Briefly describe the compositional arrangement of this painting.</p>	2

	SECTION-C Attempt <u>any two</u> questions from the given options	
14.	<p>'Pahari miniatures are exceptional in their painting style, where Lord Krishna is composed as the central figure of this miniature painting, surrounded by a group of female devotees, each displaying a unique gesture of devotion towards him.'</p> <ol style="list-style-type: none"> Throw light on the characteristics and the painting style of Pahari Miniatures Identify the title, sub-school, artist, and medium of the painting mentioned. Explain about how has the artist, through powerful compositional arrangement, has successfully evoked an emotional atmosphere of divinity and love. 	6
15.	<p>A heart wrenching scene unfolds in this painting, where an animal struggles under excessive weight and is about to die. This painting symbolically highlights the owner's lack of empathy.</p> <ol style="list-style-type: none"> Identify the title, artist, medium, and technique. How does the color scheme of the painting enhance the emotion the artist is trying to convey? What does this artwork make you feel and why? 	6
16.	<p>Carefully Observe and describe the painting given below</p> <ol style="list-style-type: none"> Mention the title, artist, medium, and technique. Emphasize its compositional arrangements. Write your answer, highlighting the idealized expressions and emotions depicted. 	6

*Please note that the assessment scheme of the Academic Session 2024-25 will continue in the current session i.e. 2025-26.



*Please note that the assessment scheme of the Academic Session 2024-25 will continue in the current session i.e. 2025-26.